



LISA Distribution

The proven solution for Distributors!

SAP Certified Integration

A Warehouse Management System (WMS) is designed to control the movement and storage of materials within an operation as well as process the associated transactions. Directed picking, optimized movement, and directed put away are all key items to a WMS that allow the client to know the inventory that is on hand at any given moment. LISA Distribution is designed to control all of your warehouse activities and allows you to track every unit down to the lowest level of detail.

LISA WMS is based on a Pocket PC interface with radio frequency terminal and bar code scanner and allows the user to perform inventory transactions from anywhere in the warehouse. Together these two modules help the client maintain a successful and efficient inventory management system. With LISA Distribution the client always has an exact picture of all the warehouses and their specific content.

LISA Distribution:

SAP Certified Integration

- Multi-company and Multi warehouse
- Inventory management
- Bin management
- Optimized put away and picking route
- Receiving against a purchase order
- Shipping against a customer order
- Inventory transfer, adjustment and inquiry
- Cycle counting
- Batch and serial number management
- Location management with pick path sequence, velocity, capacity, and zone
- Random or fixed product locations
- Runs on Internet Explorer technology
- Based on N^{ware} unlimited user pricing model

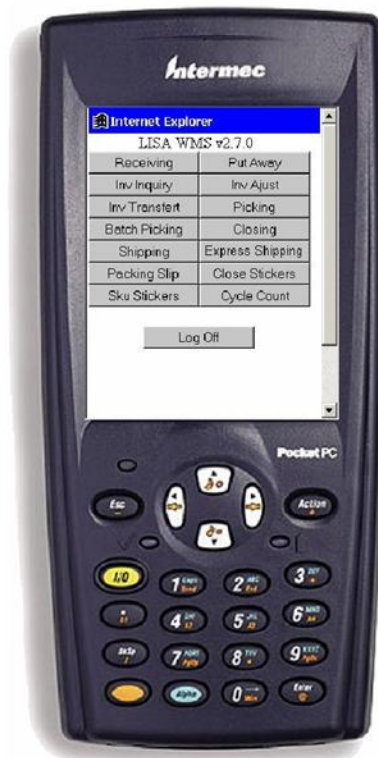


LISA Distribution enables companies to efficiently manage and track product flow and movements using RF handheld devices. It is flexible enough to accommodate single or multiple Distribution Centers and inventory information is always available on the fly, accurate and current.

One of the great features of LISA Distribution is that it can connect to SAP Business One in real time for complete data validation and integrity. It performs complete warehouse management operations from receiving against Purchase Orders and directed put away, all the way to closing and shipping. It can also integrate to its sister application, LISA Manufacturing, for complete integration of warehouse operations to the manufacturing portion of the company.

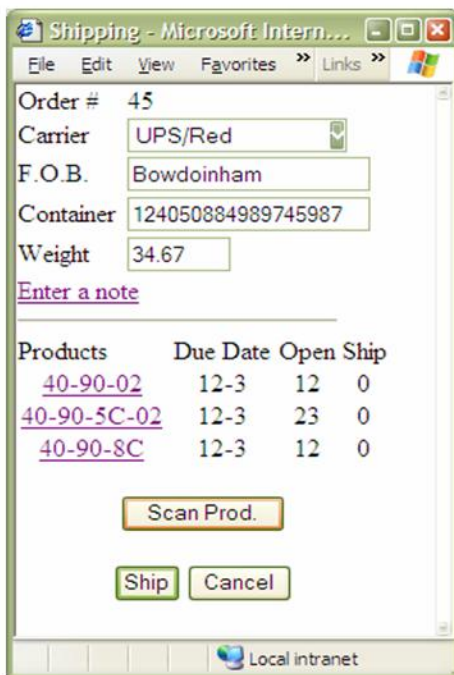


LISA WMS



- User friendly menu / Wizard-like
- Designed to handle multiple companies and multiple warehouses
- Soft allocation concept
- Unlimited license model
- Real time validation
- Based on thin client connectivity
- Radio frequency controlled for remote locations

Shipping



- Provides packing slips and carton content labels
- Multi-carrier module provides real time inventory updating, Bill of Lading and manifests
- Can specify Carrier and Notes
- Verifies inventory quantities to avoid shipping error
- Specifies batches and serial numbers
- Express shipping—ship without doing picking and closing procedures
- Many control points by license plate, location, quantity, products or UPC number



Receiving

- Handles one or more items at a time
- Multiple receivers on one order
- Stock immediately available for picking
- Can receive by blind count or by the quantity received
- Distribute received items directly to different locations

Receiving Multiple Orders

- On the same receiving session it is possible to receive different orders from different suppliers
- Receiving session can be saved and postponed to a later time allowing the operators to leave for breaks
- Allows for error checking
- Ultimate chance to redo on confirmation before save
- Able to indicate the production order for which an item is being received



Cycle Counting

- Easy to use
- Two steps— counting and approval of the results
- Live data—can be performed 24/7
- Accurate counting
- Spontaneous part identification
- Confirmation identification of part, including batch numbers and serial numbers to ensure accuracy
- Accurate location display and confirmation of location
- Positive means of measuring accuracy based on the output of the cycle count process

Return on Investment

- Visibility and control over all warehouse operations
- Improves warehouse facility layout
- Increases inventory accuracy
- Increases order fulfillment and accuracy
- Calculates item velocity to ensure inventory is optimally located
- Provides picking and packing
- Increases profitability
- Intelligent work direction (Radio Frequency – facilitates better decision-making)
- Historical references of customer's orders (cost)
- More time for employees to work on value added activities

N'ware delivers complete and certified solutions for SAP Business One

For more information contact Dan Parent at
1-800-270-9420 x83



Portsmouth (NH), Montreal, Quebec,
Saint-Georges
1-800-270-9420
Website: www.nwaretech.com

